

Variation in Prenatal Diagnosis of Congenital Heart Disease in Infants

Michael D. Quartermain, MD^a, Sara K. Pasquali, MD^b, Kevin D. Hill, MD^c, David J. Goldberg, MD^d, James C. Huhta, MD^e, Jeffrey P. Jacobs, MD^f, Marshall L. Jacobs, MD^g, Sunghee Kim, PhD^h, Ross M. Ungerleider, MD, MBAⁱ

abstract

BACKGROUND AND OBJECTIVE: Prenatal diagnosis allows improved perioperative outcomes for fetuses with certain forms of congenital heart disease (CHD). Variability in prenatal diagnosis has been demonstrated in other countries, leading to efforts to improve fetal imaging protocols and access to care, but has not been examined across the United States. The objective was to evaluate national variation in prenatal detection across geographic region and defect type in neonates and infants with CHD undergoing heart surgery.

METHODS: Cardiovascular operations performed in patients ≤ 6 months of age in the United States and included in the Society of Thoracic Surgeons Congenital Heart Surgery Database (2006–2012) were eligible for inclusion. Centers with $>15\%$ missing prenatal diagnosis data were excluded from the study. Prenatal diagnosis rates were compared across geographic location of residence and defect type using the χ^2 test.

RESULTS: Overall, the study included 31 374 patients from 91 Society of Thoracic Surgeons Congenital Heart Surgery Database participating centers across the United States. Prenatal detection occurred in 34% and increased every year, from 26% (2006) to 42% (2012). There was significant geographic variation in rates of prenatal diagnosis across states (range 11.8%–53.4%, $P < .0001$). Significant variability by defect type was also observed, with higher rates for lesions identifiable on 4-chamber view than for those requiring outflow tract visualization (57% vs 32%, $P < .0001$).

CONCLUSIONS: Rates of prenatal CHD detection in the United States remain low for patients undergoing surgical intervention, with significant variability between states and across defect type. Additional studies are needed to identify reasons for this variation and the potential impact on patient outcomes.

WHAT'S KNOWN ON THIS SUBJECT: Prenatal diagnosis may lead to benefits in outcomes for certain forms of critical congenital heart disease. Despite recognized benefits, single-center studies and focused regional efforts suggest that prenatal detection rates for congenital heart disease remain low in the United States.

WHAT THIS STUDY ADDS: We describe prenatal detection rates for a large cohort of neonates and infants undergoing heart surgery across a range of congenital heart defects. Additionally, this study adds new information by demonstrating geographic variability of prenatal detection rates across the United States.

Departments of ^aPediatrics, and ¹Cardiovascular and Thoracic Surgery, Wake Forest University School of Medicine, Winston-Salem, North Carolina; ^bDepartment of Pediatrics and Communicable Diseases, University of Michigan C.S. Mott Children's Hospital, Ann Arbor, Michigan; ^cDepartment of Pediatrics, Duke University Medical Center, Durham, North Carolina; ^dDepartment of Pediatrics, University of Pennsylvania School of Medicine, Philadelphia, Pennsylvania; ^eDepartment of Perinatal Cardiology, Pediatrix Medical Group and ^fDepartment of Surgery, All Children's Hospital and Johns Hopkins University, St Petersburg, Florida; ^gDivision of Cardiac Surgery, Department of Surgery, Johns Hopkins School of Medicine, Baltimore, Maryland; and ^hDuke Clinical Research Institute, Durham, North Carolina

Drs Quartermain, Pasquali, Hill, Goldberg, Huhta, Jacobs, Jacobs, and Ungerleider conceptualized and designed the study, were involved with data analysis and interpretation, and drafted the initial manuscript; Dr Kim performed the statistical analysis, was involved with study design, and reviewed and revised all versions of the manuscript; and all authors approved the final manuscript as submitted.

www.pediatrics.org/cgi/doi/10.1542/peds.2014-3783

DOI: 10.1542/peds.2014-3783

Accepted for publication Apr 30, 2015

Address correspondence to Michael D. Quartermain, MD, Department of Pediatrics, Section on Cardiology, Wake Forest University School of Medicine, Medical Center Boulevard, Winston-Salem, NC 27157. E-mail: mquarter@wakehealth.edu

PEDIATRICS (ISSN Numbers: Print, 0031-4005; Online, 1098-4275).

Copyright © 2015 by the American Academy of Pediatrics

Congenital heart disease (CHD) is the most common class of birth defect, affecting 8 in 1000 live births, with approximately one-quarter of these children needing intervention in the first year of life.¹⁻³ Advances in congenital heart surgery have improved survival rates for neonates and infants with CHD, and efforts are now being made to optimize perinatal and preoperative factors to promote improvements in outcomes. A diagnosis of CHD before birth allows prenatal counseling and coordination of delivery at an experienced cardiac center. Evidence now suggests that a prenatal diagnosis may lead to benefits in early postnatal status and outcomes in certain critical forms of CHD.^{4,5}

Despite recognized benefits of prenatal CHD diagnosis and nearly universal availability of prenatal ultrasound,^{6,7} recent single-center studies and focused regional efforts suggest that prenatal detection rates (PDRs) for CHD remain low in the United States.⁸⁻¹³ In other countries, large-scale assessments using birth registries have identified significant regional variability of prenatal CHD diagnosis.¹⁴⁻¹⁶ Centralized prenatal health care efforts in these countries have led to implementation of protocols to improve access to care and standardization of fetal imaging. In the United States, assessments of national PDRs are lacking, and the extent of variation across regions has not been defined.

The purpose of this study was to provide a baseline assessment of national prenatal CHD detection rates and recent trends for a large cohort of neonates and infants undergoing heart surgery. We used a clinical registry to describe variation in the frequency of prenatal detection across the United States by geographic location and defect type. We also assessed the influence of noncardiac congenital anomalies and chromosomal abnormalities on PDRs.

METHODS

Data Source

The Society of Thoracic Surgeons Congenital Heart Surgery Database (STS-CHSD) was used for this study. It is estimated that the database represents ~93% of all US centers that perform congenital heart surgery and >96% of all operations.¹⁷ Coding in the database is performed by clinicians and ancillary support staff using the International Pediatric and Congenital Cardiac Code¹⁸ and is entered into the STS-CHSD data collection form (version 2.5 or 3.0).¹⁹ This study was approved by the STS-CHSD Access and Publications Committee and the Duke University Institutional Review Board.

Study Population

All first cardiovascular operations, including both cardiopulmonary bypass and nonbypass surgeries, in neonates and infants (≤ 6 months of age) performed in the United States and included in the STS-CHSD (January 2006 to December 2012) were eligible for inclusion. The year 2006 was chosen as the starting point because the variable specifying prenatal diagnosis was added to the STS-CHSD at this time. Patients with a history of previous cardiac surgery and those for whom patent ductus arteriosus ligation or organ procurement was the primary procedure were excluded. From this cohort ($n = 44\,934$ patients, 109 centers), additional exclusions were centers with >15% missing data for prenatal diagnosis (18 centers, 8741 patients), patients from the remaining 91 centers with missing data for the prenatal diagnosis variable ($n = 624$), and patients with defects for which fetal diagnosis is not routinely made, either because of anatomic challenges or less clinical relevance in the first 6 months of life ($n = 4195$). These defects included atrial septal defects, coronary artery anomalies, partial anomalous pulmonary venous connection, and vascular rings. For the

secondary geographic data analysis we excluded states with <50 potentially eligible patients enrolled in STS-CHSD for the time frame of the study.

Defect Classification

The patient's fundamental diagnosis, defined previously²⁰ as the most complex cardiac anomaly or condition, was used to categorize defects. When the fundamental diagnosis was missing, the primary diagnosis of the operation, defined as the most important diagnosis relative to the procedure being performed, was used. Data were compiled overall and for specific diagnostic groups that warrant surgical intervention in the newborn period or early in infancy. Defects were also classified by whether they would probably have abnormalities amenable to detection on a prenatal screening ultrasound 4-chamber view (4CV). For this specific analysis, those with a normal 4CV included transposition of the great arteries (TGA), tetralogy of Fallot (TOF), double-outlet right ventricle, and truncus arteriosus. Defects considered to have an abnormal 4CV included complete atrioventricular septal defect, congenitally corrected transposition of the great arteries, tricuspid valve disease (including Ebstein anomaly), and all single-ventricle defects including hypoplastic left heart syndrome (HLHS). Other defects were not included in this specific analysis because of variability of 4CVs (ie, could be either normal or abnormal depending on severity of defect within a diagnosis category or related to gestational age at time of screening ultrasound).

Patient Region

Patient region was defined by the patient's permanent residence at the time of admission for surgery as collected in the STS-CHSD. The patient region variable was 99.2% complete in the database. Patient region was chosen as the variable of interest because it more accurately reflected the location where prenatal

care took place rather than the geographic location where the surgical intervention was performed. Patient region was classified by both individual state and by the US Department of Health and Human Services (USDHHS) 10 geographic regions.²¹ The USDHHS regional classification system assigns a number and a major city to each region. By convention these regions are defined according to major cities as follows: 1, “Boston” (including Connecticut, Maine, Massachusetts, New Hampshire, Rhode Island, Vermont); 2, “New York” (including New Jersey, New York); 3, “Philadelphia” (including Delaware, District of Columbia, Maryland, Pennsylvania, Virginia, West Virginia); 4, “Atlanta” (including Alabama, Florida, Georgia, Kentucky, Mississippi, North Carolina, South Carolina, Tennessee); 5, “Chicago” (including Illinois, Indiana, Michigan, Minnesota, Ohio, Wisconsin); 6, “Dallas” (including Arkansas, Louisiana, New Mexico, Oklahoma, Texas); 7, “Kansas City” (including Iowa, Kansas, Missouri, Nebraska); 8, “Denver” (including Colorado, Montana, North Dakota, South Dakota, Utah, Wyoming); 9, “San Francisco” (including Arizona, California, Hawaii, Nevada); 10, “Seattle” (including Alaska, Idaho, Oregon, Washington).

Other Data Collection

Other variables collected from the STS-CHSD included patient demographics, presence of

noncardiac congenital anatomic abnormalities, chromosomal abnormalities or genetic syndromes, and relative surgical complexity as measured by STAT Mortality category (surgical complexity, scale of 1–5, with a higher number representing higher complexity).²²

Analysis

Patient characteristics and other pertinent variables were summarized overall and stratified by the presence or absence of prenatal detection according to frequencies and proportions for categorical variables and medians and interquartile ranges for continuous variables. PDRs were assessed overall and by study year. A sensitivity analysis was performed excluding sites that did not submit data during the entire time period (2006–2012) to further examine trends. PDRs were then evaluated across defect type according to the fundamental diagnosis and to whether defects were amenable to detection on 4CV. PDRs were also compared across geographic location of residence and defect type. Finally, subgroup analysis was performed to establish the potential influence of a chromosomal abnormality, syndrome, or noncardiac congenital anatomic abnormality with PDRs. χ^2 tests were used in comparisons of PDRs for all analyses. A *P* value <.05 was considered statistically significant. All analyses were performed in SAS version 9.3 (SAS Institute, Inc, Cary, NC).

RESULTS

Study Population Characteristics and Overall Prenatal Detection Rates

The study included a total of 31 374 patients from 91 STS participating centers across the United States. From this cohort there were 17 064 neonates who underwent surgery at 0 to 30 days of life and 14 310 infants who underwent surgery at 31 days to 6 months of life. Patient characteristics are shown in Table 1, including presence of noncardiac abnormalities and relative surgical complexity (STAT Mortality category). The overall rate of prenatal diagnosis was 34% (10 795/31 374) over the 6-year study period, with higher PDRs in those having surgery as neonates compared with those having surgery as infants (43.2% vs 23.9%, *P* < .0001). PDRs for both the neonatal and infant groups increased each year, from 26% (2006) to 42% (2012) (Fig 1). Sensitivity analysis including only the centers that participated in the database every year since 2006 confirmed similar trends, *P* < .0001.

Prenatal Detection Rates by Defect Type

PDRs were examined across several specific diagnoses (Table 2). There was significant variation of PDRs across defect type (*P* < .0001), with the highest detection rates for HLHS (67%) and the lowest detection rates for total anomalous pulmonary venous connection (9.1%). Defects associated with an abnormal 4CV

TABLE 1 Study Population Characteristics

Variable	Neonates (<i>n</i> = 17 064)			Infants (<i>n</i> = 14 310)		
	Prenatal Diagnosis Yes (<i>n</i> = 7373)	Prenatal Diagnosis No (<i>n</i> = 9691)	<i>P</i>	Prenatal Diagnosis Yes (<i>n</i> = 3422)	Prenatal Diagnosis No (<i>n</i> = 10 888)	<i>P</i>
Age at surgery, d	6.0 (4.0, 9.0)	8.0 (5.0, 13.0)	<.0001	101 (63, 137)	103 (67, 139)	.0068
Wt at surgery, kg	3.1 (2.7, 3.5)	3.2 (2.8, 3.6)	<.0001	4.6 (3.8, 5.5)	4.7 (3.9, 5.6)	<.0001
Gender, <i>n</i> (%) male	4170 (56.6)	5865 (60.5)	<.0001	1761 (51.5)	5808 (53.3)	.0514
Chromosomal abnormality or syndrome	1903 (25.8)	1884 (19.4)	<.0001	1784 (52.1)	3922 (36.0)	<.0001
Noncardiac anomaly	179 (4.4)	90 (2.1)	<.0001	128 (6.1)	147 (2.9)	<.0001
STAT category 4 or 5 ^a	5422 (73.6)	5407 (55.8)	<.0001	914 (26.7)	2043 (18.8)	<.0001

Data for continuous variables are presented as median and interquartile range and for categorical variables as *N* (%).

^a STAT Mortality category indicates relative surgical complexity on a scale of 1–5, with higher numbers representing more complex diagnoses.

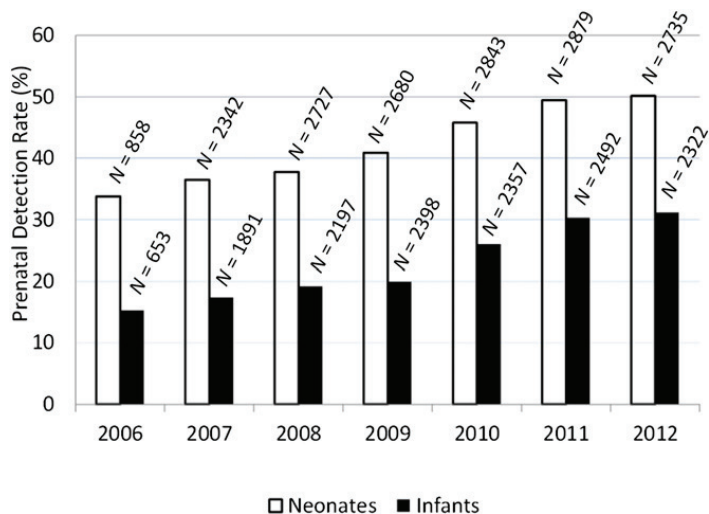


FIGURE 1

PDRs by year for neonatal (white bars) and infant (black bars) cohorts. *N* indicates the total number of subjects represented by each bar.

were more likely to have prenatal identification than those with a normal 4CV (56.7% vs 32.2%, $P < .0001$; Fig 2). The addition of a ventricular septal defect led to higher PDRs for lesions such as TGA, coarctation of the aorta, and pulmonary atresia. Additional PDRs for various CHD categories are shown in Table 2.

Prenatal Detection in Those With Additional Noncardiac Anomalies

Noncardiac anatomic abnormalities, syndromes, or chromosomal

abnormalities were found to be present in 10 037 (31.9%) of the overall cohort. These abnormalities were more common in the infant cohort (40.9%) than in the neonatal cohort (23.0%). Patients with additional abnormalities had higher PDRs (39% vs 32%, $P \leq .0001$). Similar trends were seen in both the neonate and infant subgroups (Table 3).

Prenatal Detection by Geographic Location

Figure 3 demonstrates PDRs for the 10 USDHHS regions. There was

TABLE 2 PDRs by Fundamental Diagnosis

Fundamental Diagnosis	Total <i>N</i>	<i>N</i> With Prenatal Detection (%)
TAPVC	1359	123 (9.1)
Ventricular septal defect	4706	577 (12.3)
Isolated arch obstruction	3901	841 (21.6)
Aortic stenosis	318	81 (25.5)
Arch obstruction with VSD	1174	311 (26.5)
TOF	3359	895 (26.6)
TGA-IVS	1898	530 (27.9)
TGA-VSD	1257	463 (36.8)
Atrioventricular septal defect	3172	1295 (40.8)
Pulmonary stenosis and pulmonary atresia with IVS	1056	433 (41.1)
Truncus arteriosus	761	314 (41.2)
TOF with APV syndrome	200	82 (41.3)
Double-outlet right ventricle	1227	539 (43.9)
Congenitally corrected TGA	127	57 (44.9)
Pulmonary atresia with VSD	1082	500 (46.2)
Tricuspid valve disease ^a	262	147 (56.1)
Single ventricle, other	2362	1482 (62.7)
Hypoplastic left heart syndrome	3153	2125 (67.4)

APV, absent pulmonary valve; IVS, intact ventricular septum; TAPVC, total anomalous pulmonary venous connection; TGA-IVS, transposition of the great arteries with intact ventricular septum; TGA-VSD, transposition of the great arteries with ventricular septal defect; VSD, ventricular septal defect.

^a Includes Ebstein anomaly and dysplastic tricuspid valve disease.

significant variation across regions, with PDRs ranging from 24% (95% confidence interval [CI], 22%–25%) in the “Dallas” region to 46% (95% CI, 44%–47%) in the “Philadelphia” region, $P < .0001$. There was also significant variation at the state level, with a wide range of PDRs, from a low of 11.8% (95% CI, 4.6%–19.1%) to a high of 53.4% (95% CI, 50.2%–56.5%), $P < .0001$ (Fig 4).

DISCUSSION

We assessed PDRs for a large cohort of children with CHD undergoing heart surgery as neonates and infants across the United States. Our analysis of >31 000 patients from 47 states is the largest study to date assessing PDRs. In our cohort, patients with more critical forms of CHD necessitating surgery in the neonatal period had higher PDRs (43%) than those undergoing surgery as infants (24%). Our findings are consistent with recent smaller series in California, Nevada, Ohio, Atlanta, and Utah demonstrating CHD detection rates ranging from 10% to 43%,^{8–13} despite some differences in methods for selecting study populations across studies. Our current work confirms these findings on a national level with a large cohort of patients with CHD undergoing surgery.

A main goal of the study was to assess potential variability of PDRs across various types of cardiac anomalies. We demonstrated wide variability in PDRs across different anatomic diagnoses, with forms of CHD that have abnormalities amenable to identification on a screening ultrasound 4CV being diagnosed more frequently than those that require outflow tract views (OFTVs) for detection. When compared with recent studies in the United States, our PDRs for specific defect types are similar but with a larger cohort of patients (Table 4).

An additional goal of the study was to examine regional variability of PDRs. To the best of our knowledge

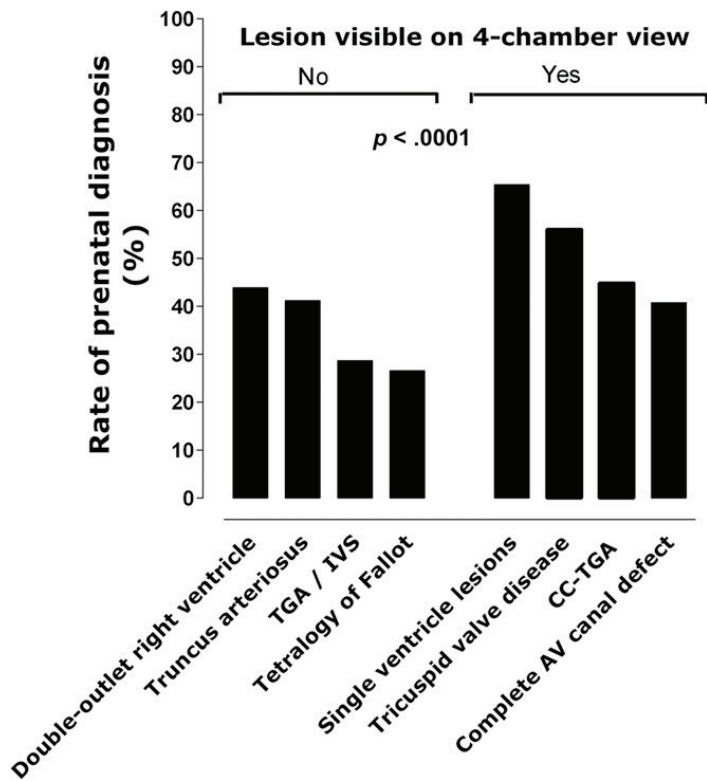


FIGURE 2

PDRs are demonstrated by defect visibility on 4CV (No/Yes). AV, atrioventricular; CC-TGA, congenitally corrected transposition of the great arteries; TGA/IVS, transposition of the great arteries with intact ventricular septum. Single-ventricle lesions include HLHS.

this is the first study to examine this subject across the United States. In our cohort, there was significant variation across the country, by both region and state. Previous studies in other countries have assessed variation of PDRs. In Canada, variability by jurisdictions has been reported, and the authors suggested that differences in imaging skills and access to fetal echocardiography were potential causes.¹⁶ Garne et al¹⁴ used data from 20 European registries demonstrating a wide range of PDRs between countries and even between those with similar screening recommendations. Our current findings are similar in that

regional variation is significant and probably multifactorial.

Study Implications

Anomalies of the cardiovascular system are the most common form of birth defect,¹ and perinatal death from CHD is the most common form of infant mortality.^{23,24} Therefore, effective screening for CHD before birth should be a public health priority in the United States. In an era of nearly universal availability of prenatal ultrasound,^{8,9,11} these rates of prenatal CHD diagnosis are suboptimal in this important group of patients who need surgical intervention after birth. From our current data we do not know whether the missed opportunity for prenatal

CHD detection results from an unnoticed diagnosis on the screening obstetric ultrasound or possibly a missed diagnosis at the level of a fetal echocardiogram. Previous studies have demonstrated very high sensitivities and specificities for detection of complex CHD by fetal echocardiography.^{9,11,25} Additionally, fetal echocardiography requires an initial referral from the obstetric community. Therefore, the highest-yield strategies to increase detection rates in our current system should involve improvements to the midgestation obstetric screening ultrasound. Multiple factors are probably playing a role in missed CHD identification at the screening ultrasound level, including differences in skill set of the sonographer, experience and training of the physician performing the study, and issues related to access in certain regions to a pediatric cardiologist for fetal echocardiography.

In the United States current recommendations for low-risk pregnancies include a second trimester screening ultrasound to assess for fetal anomalies,²⁶ with the majority of these studies being performed by community-based physicians.⁸ Previous studies have shown that variability in the number and timing of prenatal ultrasounds a patient receives is an important factor, with those lacking a detailed anatomic assessment being more likely to be associated with missed CHD detection.¹¹ Furthermore, it has been shown that community-based obstetricians and radiologists do not always adhere to the complete components of screening ultrasounds,²⁷ and when risk factors for CHD are present, referral patterns for fetal echocardiography by a pediatric cardiologist appear to vary significantly.⁹ Future efforts to increase prenatal CHD diagnosis rates should include an attempt to identify local barriers to improved adherence to prenatal cardiac screening protocols and referral guidelines for fetal echocardiography.

TABLE 3 PDRs by Presence of Additional Noncardiac Anomaly or Genetic Syndrome

Age Group	Risk Factor Present	PDR	Risk Factor Not Present	PDR	<i>P</i>
Neonates (<i>n</i> = 16 741)	3856, 23%	51%	12 885, 77%	41%	<.0001
Infants (<i>n</i> = 14 097)	5772, 41%	31%	8325, 59%	19%	<.0001
Overall (<i>n</i> = 30 838)	9628, 31%	39%	21 210, 69%	32%	<.0001

Cohorts are grouped by whether a risk factor was present. A risk factor was defined as the presence of a noncardiac anomaly or genetic syndrome. PDRs are provided. A total of 536 patients were excluded from this analysis because of missing data. *P* represents the difference in PDRs based on presence or absence of a risk factor.

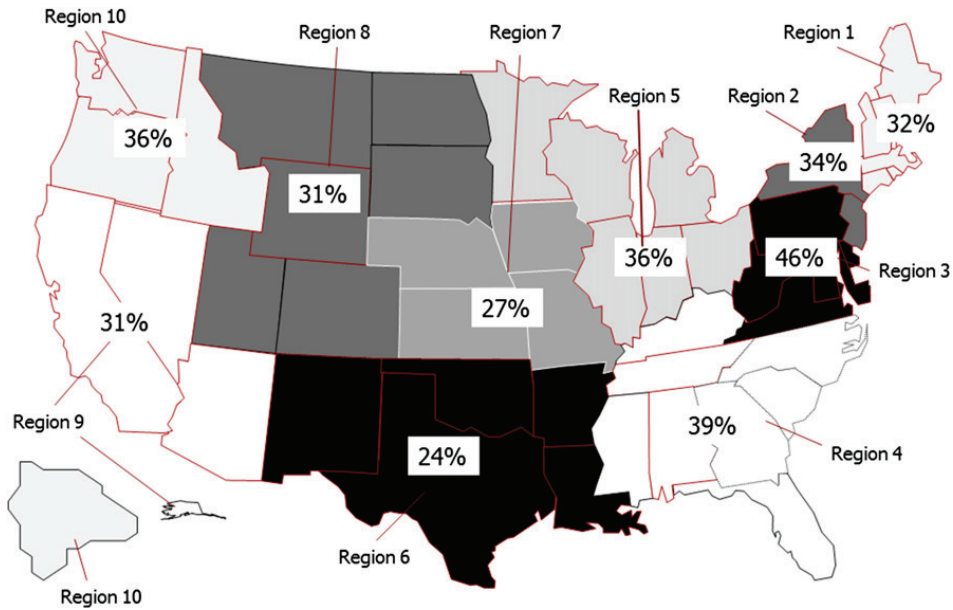


FIGURE 3

The 10 USDHHS regions, with PDRs. Oregon, Nevada, and Utah did not have sufficient prenatal diagnosis data during study period to be included in the analysis.

Another important question is how much improvement in PDRs could be expected by an obstetric screening ultrasound for cardiac anomalies. To this end, comparing PDRs for cardiac defects with rates of other congenital anomalies may help set reasonable goals for the medical community performing fetal imaging. Congenital diaphragmatic hernia is a defect that, similar to CHD, lacks biomarkers to aid in prenatal detection and relies solely on ultrasound for diagnosis. Data from 2 large registry-based studies show that detection rates of

60% to 75% can be attained for this anomaly.^{28,29} This finding suggests that an improvement in PDRs for cardiac anomalies to a comparable range should be a reasonable goal of fetal screening programs across the United States. Another central element to improving PDRs is related to the role of incorporating OFTVs of the fetal heart on screening ultrasound examination. During the time frame of this study, basic fetal cardiac screening relied mostly on a 4CV,^{30,31} and this limitation probably contributes to our findings

of low detection rates for defects such as TGA, TOF, and double-outlet right ventricle, which require OFTVs for diagnosis. It has been shown that OFTVs are more likely to be abnormal in midgestation screening for fetuses with critical forms of CHD, whereas 4CVs detect a smaller percentage of critical CHD cases.¹⁰ Recently, obstetric guidelines have been updated to recommend OFTVs in addition to the 4CV during the second trimester screening ultrasound.³² Although this is an important advancement for prenatal screening programs, it remains unclear whether the skill to perform these views is consistently present among doctors at the community level. Efforts in the United States have shown that prenatal screening for CHD can be improved by implementing an educational program for sonographers with specific training in the use of OFTVs.³³ In 1 cohort the addition of OFTVs to the standard 4CV during prenatal screening improved detection rates to 70%.³⁴ These studies may serve as a model for development of future collaborative fetal centers and provide data on how much improvement may be expected through educational programs aimed at sonographer training and increased use of OFTVs.

Study Limitations

This study was limited to patients eligible for enrollment in a cardiac surgical database. Therefore, we are presenting data on a large cohort of neonates and infants undergoing surgery. We were not able to include information on terminations or fetal demise. Additionally, infants who underwent catheter-based interventions or died with undetected CHD were also not included. Therefore, our PDRs are for a cohort of patients who undergo heart surgery and probably underestimate overall rates for all patients with CHD. In previous reports, fetal demise in fetuses with CHD was uncommon,¹⁵

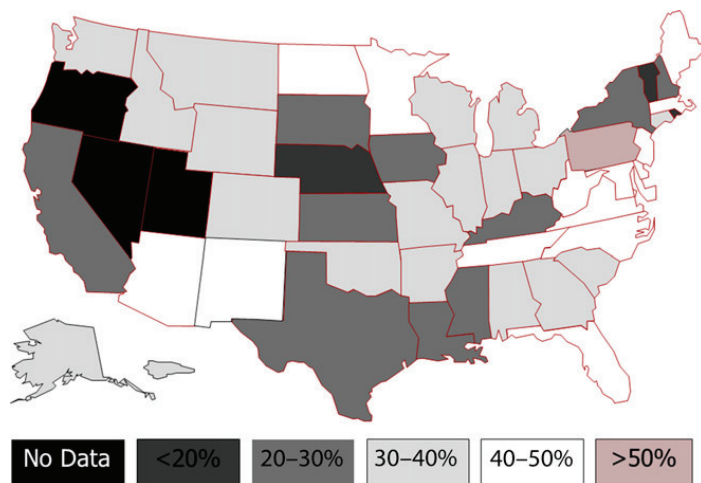


FIGURE 4

PDRs by state. States in black (Oregon, Nevada, and Utah) did not have sufficient prenatal diagnosis data during study period to be included in the analysis.

TABLE 4 PDRs Across US Studies

Study, y	Total N	PDRs	TGA	TOF	Atrioventricular Septal Defect	CoA	HLHS
Friedberg et al 2009, (%)	309	36%	6/31 (19)	14/45 (31)	8/16 (50)	9/39 (23)	11/18 (61)
Sklansky et al 2009, (%)	200	33%	4/24 (17)	11/34 (32)	7/16 (44)	5/26 (19)	12/20 (60)
Acherman et al 2007, (%)	161	36%	2/6 (33)	7/23 (30)	12/28 (43)	5/27 (19)	8/13 (62)
Pinto et al 2012 ^a	1474	39%	15%	26%	48.5%	18.5%	70%
Sekar et al 2013, (%)	95	43%	4/11 (36)	N/A	5/9 (56)	3/12 (25)	10/13 (77) ^b
Quartermain et al 2015, (%)	31 074	34%	993/3155 (31)	873/3359 (27)	1268/3172 (41)	841/3901 (22)	2017/3153 (67)

Total N, total number of patients included in each study. CoA, coarctation of the aorta; TGA, transposition of the great arteries.

^a Study reports only the overall percentages for PDRs; specific numbers of patients with each defect type not available.

^b Data reported in this study represent all forms of single-ventricle heart disease including HLHS.

whereas termination rates in the United States are extremely variable, ranging from as low as 5% in the Southeast for all forms of CHD³⁵ to as high as 15% for HLHS in the Northeast.³⁶ A recent study, which included termination cases in their cohort from northern California,⁸ demonstrated very similar PDRs for various forms of CHD in comparison with our current study, suggesting that the effect of not including termination data in our cohort, although important, may be minimized by the large size of our study population. Additional study limitations include lack of information on timing of prenatal diagnosis, the type of physician performing the screening ultrasound, or the percentage of patients referred for fetal echocardiography. This information will be important in future efforts as individual states review the status of their current screening programs. Finally, although the STS-CHSD has rigorous data

quality control processes and data verification by site audits, the potential for error related to data acquisition at participating institutions remains a possibility.

CONCLUSIONS

This is the first study to describe PDRs for a large cohort of neonates and infants undergoing heart surgery across the United States. Our data suggest that opportunities exist to improve prenatal CHD screening because the majority of patients with cardiac defects that require surgery in first 6 months of life go undetected before birth. We found that PDRs vary significantly across defect type, with those having abnormalities on a 4CV being more readily identified. Additionally, significant variability in PDRs by region and state was demonstrated despite national screening guidelines. Future collaborative efforts to improve adherence to prenatal screening

programs with development of training opportunities for physicians and sonographers performing fetal imaging may improve the state of prenatal CHD detection in the United States.

ABBREVIATIONS

4CV: 4 chamber view
 CHD: congenital heart disease
 CI: confidence interval
 HLHS: hypoplastic left heart syndrome
 OFTVs: outflow tract views
 PDRs: prenatal detection rates
 STS-CHSD: Society of Thoracic Surgeons Congenital Heart Surgery Database
 TGA: transposition of the great arteries
 TOF: tetralogy of Fallot
 USDHHS: US Department of Health and Human Services

FINANCIAL DISCLOSURE: Dr Pasquali receives support from the National Heart, Lung, and Blood Institute (grant K08HL103631). Dr Hill receives support from the National Center for Advancing Translational Sciences of the National Institutes of Health (grant UL1TR001117). The other authors have indicated they have no financial relationships relevant to this article to disclose.

FUNDING: Supported by the Society of Thoracic Surgeons.

POTENTIAL CONFLICT OF INTEREST: Dr Jacobs is chair of the Society of Thoracic Surgeons Congenital Heart Surgery Database Task Force. The other authors have indicated they have no potential conflicts of interest to disclose.

REFERENCES

1. Ferencz C, Rubin JD, McCarter RJ, et al. Congenital heart disease: prevalence at livebirth. The Baltimore–Washington Infant Study. *Am J Epidemiol.* 1985; 121(1):31–36
2. Hoffman JL. Incidence of congenital heart disease: II. Prenatal incidence. *Pediatr Cardiol.* 1995;16(4):155–165
3. Talner CN. Report of the New England Regional Infant Cardiac Program, by Donald C. Fyler, MD, Pediatrics, 1980;65 (suppl):375–461. *Pediatrics.* 1998;102(1 pt 2):258–259
4. Tworetzky W, McElhinney DB, Reddy VM, Brook MM, Hanley FL, Silverman NH.

- Improved surgical outcome after fetal diagnosis of hypoplastic left heart syndrome. *Circulation*. 2001;103(9):1269–1273
5. Bonnet D, Coltri A, Butera G, et al. Detection of transposition of the great arteries in fetuses reduces neonatal morbidity and mortality. *Circulation*. 1999;99(7):916–918
 6. Allan LD. Evolution of echocardiographic findings in the fetus. *Circulation*. 1997;96(2):391–392
 7. Fernandez CO, Ramaciotti C, Martin LB, Twickler DM. The four-chamber view and its sensitivity in detecting congenital heart defects. *Cardiology*. 1998;90(3):202–206
 8. Friedberg MK, Silverman NH, Moon-Grady AJ, et al. Prenatal detection of congenital heart disease. *J Pediatr*. 2009;155(1):26–31, e1
 9. Pinto NM, Keenan HT, Minich LL, Puchalski MD, Heywood M, Botto LD. Barriers to prenatal detection of congenital heart disease: a population based study. *Ultrasound Obstet Gynecol*. 2012;40:418–425
 10. Sklansky MS, Berman DP, Pruetz JD, Chang RK. Prenatal screening for major congenital heart disease: superiority of outflow tracts over the 4-chamber view. *J Ultrasound Med*. 2009;28(7):889–899
 11. Sekar P, Heydarian HC, Cnota JF, Hornberger LK, Michelfelder EC. Diagnosis of congenital heart disease in an era of universal prenatal ultrasound screening in southwest Ohio. *Cardiol Young*. 2015;25(1):35–41
 12. Acherman RJ, Evans WN, Luna CF, et al. Prenatal detection of congenital heart disease in southern Nevada: the need for universal fetal cardiac evaluation. *J Ultrasound Med*. 2007;26(12):1715–1719, quiz 1720–1721
 13. Oster ME, Kim CH, Kusano AS, et al. A population-based study of the association of prenatal diagnosis with survival rate for infants with congenital heart defects. *Am J Cardiol*. 2014;113(6):1036–1040
 14. Garne E, Stoll C, Clementi M. Evaluation of prenatal diagnosis of congenital heart disease by ultrasound: experience from 20 European registries. *Ultrasound Obstet Gynecol*. 2001;17(5):386–391
 15. Marek J, Tomek V, Skovráněk J, Povysilová V, Samánek M. Prenatal ultrasound screening of congenital heart disease in an unselected national population: a 21-year experience. *Heart*. 2011;97(2):124–130
 16. Trines J, Fruitman D, Zuo KJ, Smallhorn JF, Hornberger LK, Mackie AS. Effectiveness of prenatal screening for congenital heart disease: assessment in a jurisdiction with universal access to health care. *Can J Cardiol*. 2013;29(7):879–885
 17. Jacobs ML, Daniel M, Mavroudis C, et al. Report of the 2010 Society of Thoracic Surgeons Congenital Heart Surgery Practice and Manpower Survey. *Ann Thorac Surg*. 2011;92(2):762–768, discussion 768–769
 18. Franklin RC, Jacobs JP, Kroghmann ON, et al. Nomenclature for congenital and paediatric cardiac disease: historical perspectives and the International Pediatric and Congenital Cardiac Code. *Cardiol Young*. 2008;18(suppl 2):70–80
 19. Society of Thoracic Surgeons. STS congenital heart surgery database v3.0. 2012. Available at: www.sts.org/node/518
 20. www.sts.org/sites/default/files/documents/pdf/CongenitalDataSpecificationsV3020090904.pdf
 21. US Department of Health & Human Services. Regional offices. 2014. Available at: www.hhs.gov/about/regionmap.html
 22. O'Brien SM, Clarke DR, Jacobs JP, et al. An empirically based tool for analyzing mortality associated with congenital heart surgery. *J Thorac Cardiovasc Surg*. 2009;138(5):1139–1153
 23. Rosano A, Botto LD, Botting B, Mastroiacovo P. Infant mortality and congenital anomalies from 1950 to 1994: an international perspective. *J Epidemiol Community Health*. 2000;54(9):660–666
 24. Lee K, Khoshnood B, Chen L, Wall SN, Cromie WJ, Mittendorf RL. Infant mortality from congenital malformations in the United States, 1970–1997. *Obstet Gynecol*. 2001;98(4):620–627
 25. Allan LD, Chita SK, Sharland GK, Fagg NL, Anderson RH, Crawford DC. The accuracy of fetal echocardiography in the diagnosis of congenital heart disease. *Int J Cardiol*. 1989;25(3):279–288
 26. AIUM practice guideline for the performance of obstetric ultrasound examinations. *J Ultrasound Med*. 2013;32:1083–1101
 27. Smulian JC, Vintzileos AM, Rodis JF, Campbell WA. Community-based obstetrical ultrasound reports: documentation of compliance with suggested minimum standards. *J Clin Ultrasound*. 1996;24(3):123–127
 28. Garne E, Haeusler M, Barisic I, Gjergja R, Stoll C, Clementi M; Euroscan Study Group. Congenital diaphragmatic hernia: evaluation of prenatal diagnosis in 20 European regions. *Ultrasound Obstet Gynecol*. 2002;19(4):329–333
 29. Boyd PA, Tonks AM, Rankin J, Rounding C, Wellesley D, Draper ES; BINOCAR Working Group. Monitoring the prenatal detection of structural fetal congenital anomalies in England and Wales: register-based study. *J Med Screen*. 2011;18(1):2–7
 30. International Society of Ultrasound in Obstetrics & Gynecology. Cardiac screening examination of the fetus: guidelines for performing the “basic” and “extended basic” cardiac scan. *Ultrasound Obstet Gynecol*. 2006;27(1):107–113
 31. Lee W. Performance of the basic fetal cardiac ultrasound examination. *J Ultrasound Med*. 1998;17(9):601–607
 32. Carvalho JS, Allan LD, Chaoui R, et al; International Society of Ultrasound in Obstetrics and Gynecology. ISUOG Practice Guidelines (updated): sonographic screening examination of the fetal heart. *Ultrasound Obstet Gynecol*. 2013;41(3):348–359
 33. Levy DJ, Pretorius DH, Rothman A, et al. Improved prenatal detection of congenital heart disease in an integrated health care system. *Pediatr Cardiol*. 2013;34(3):670–679
 34. Carvalho JS, Mavrides E, Shinebourne EA, Campbell S, Thilaganathan B. Improving the effectiveness of routine prenatal screening for major congenital heart defects. *Heart*. 2002;88(4):387–391
 35. Zybelski SC, Hill EG, Shirali G, et al. Chromosomal anomalies influence parental treatment decisions in relation to prenatally diagnosed congenital heart disease. *Pediatr Cardiol*. 2009;30(8):1105–1111
 36. Rychik J, Szwast A, Natarajan S, et al. Perinatal and early surgical outcome for the fetus with hypoplastic left heart syndrome: a 5-year single institutional experience. *Ultrasound Obstet Gynecol*. 2010;36(4):465–470

Variation in Prenatal Diagnosis of Congenital Heart Disease in Infants

Michael D. Quartermain, Sara K. Pasquali, Kevin D. Hill, David J. Goldberg, James C. Huhta, Jeffrey P. Jacobs, Marshall L. Jacobs, Sunghee Kim and Ross M. Ungerleider

Pediatrics 2015;136:e378; originally published online July 27, 2015;
DOI: 10.1542/peds.2014-3783

Updated Information & Services	including high resolution figures, can be found at: http://pediatrics.aappublications.org/content/136/2/e378.full.html
References	This article cites 33 articles, 10 of which can be accessed free at: http://pediatrics.aappublications.org/content/136/2/e378.full.html#ref-list-1
Subspecialty Collections	This article, along with others on similar topics, appears in the following collection(s): Fetus/Newborn Infant http://pediatrics.aappublications.org/cgi/collection/fetus:newborn_infant_sub Cardiology http://pediatrics.aappublications.org/cgi/collection/cardiology_sub Cardiac Surgery http://pediatrics.aappublications.org/cgi/collection/cardiac_surgery_sub
Permissions & Licensing	Information about reproducing this article in parts (figures, tables) or in its entirety can be found online at: http://pediatrics.aappublications.org/site/misc/Permissions.xhtml
Reprints	Information about ordering reprints can be found online: http://pediatrics.aappublications.org/site/misc/reprints.xhtml

PEDIATRICS is the official journal of the American Academy of Pediatrics. A monthly publication, it has been published continuously since 1948. PEDIATRICS is owned, published, and trademarked by the American Academy of Pediatrics, 141 Northwest Point Boulevard, Elk Grove Village, Illinois, 60007. Copyright © 2015 by the American Academy of Pediatrics. All rights reserved. Print ISSN: 0031-4005. Online ISSN: 1098-4275.

American Academy of Pediatrics

DEDICATED TO THE HEALTH OF ALL CHILDREN™



PEDIATRICS®

OFFICIAL JOURNAL OF THE AMERICAN ACADEMY OF PEDIATRICS

Variation in Prenatal Diagnosis of Congenital Heart Disease in Infants

Michael D. Quartermain, Sara K. Pasquali, Kevin D. Hill, David J. Goldberg, James C. Huhta, Jeffrey P. Jacobs, Marshall L. Jacobs, Sunghee Kim and Ross M. Ungerleider

Pediatrics 2015;136:e378; originally published online July 27, 2015;
DOI: 10.1542/peds.2014-3783

The online version of this article, along with updated information and services, is located on the World Wide Web at:

<http://pediatrics.aappublications.org/content/136/2/e378.full.html>

PEDIATRICS is the official journal of the American Academy of Pediatrics. A monthly publication, it has been published continuously since 1948. PEDIATRICS is owned, published, and trademarked by the American Academy of Pediatrics, 141 Northwest Point Boulevard, Elk Grove Village, Illinois, 60007. Copyright © 2015 by the American Academy of Pediatrics. All rights reserved. Print ISSN: 0031-4005. Online ISSN: 1098-4275.

American Academy of Pediatrics

DEDICATED TO THE HEALTH OF ALL CHILDREN™

